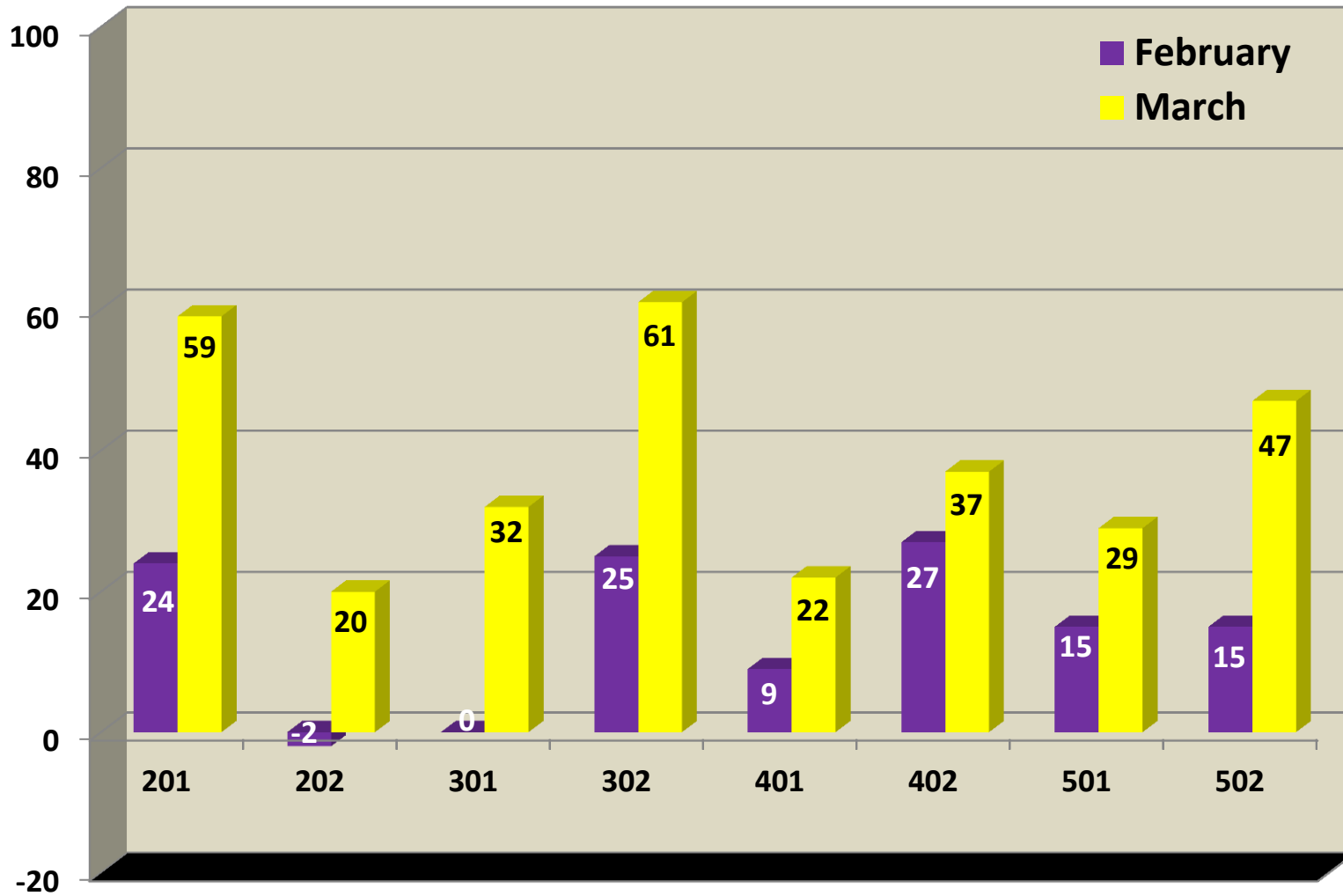


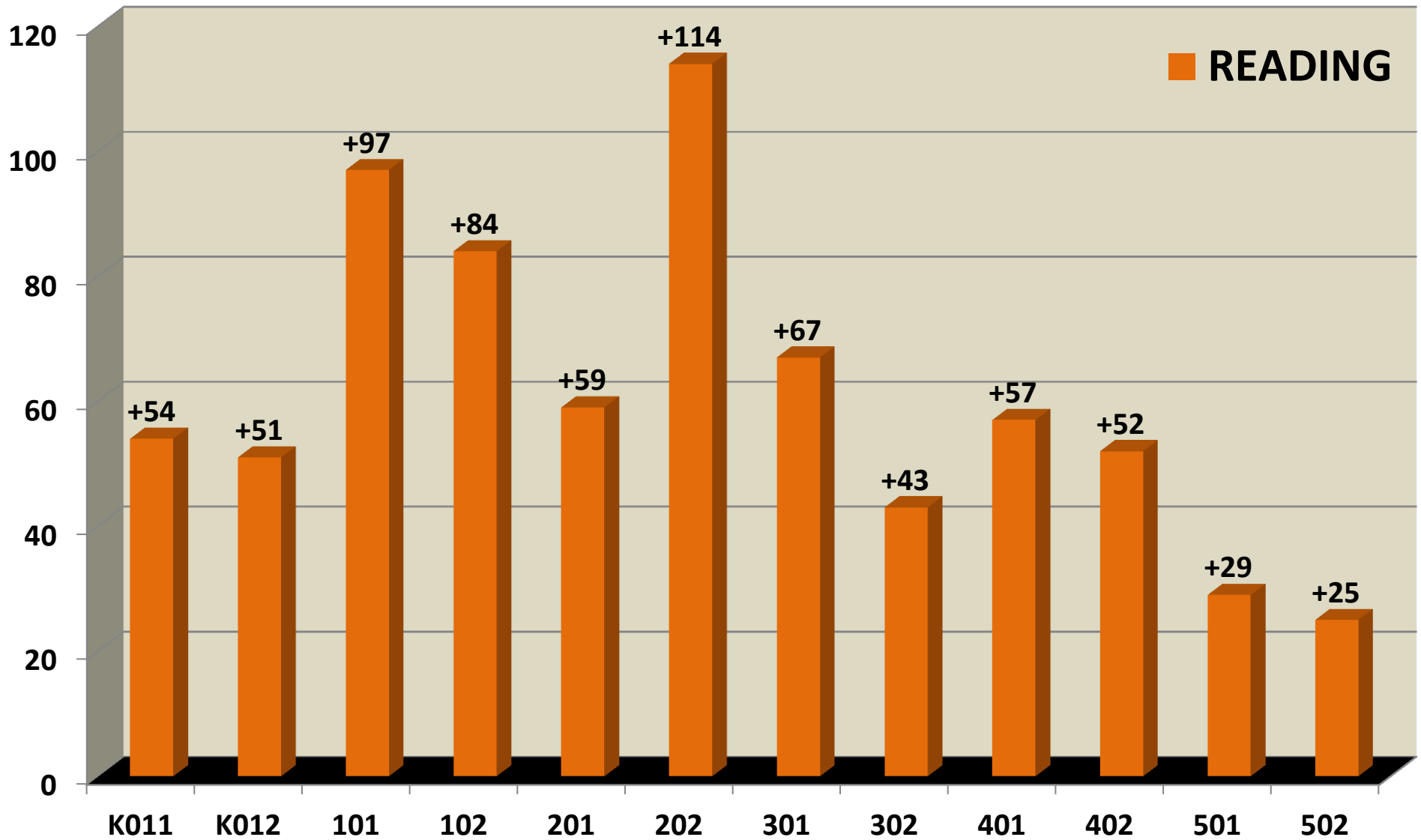
Acheive3000

**Lexile Reading Performance Growth February to March
Grades 2-5**



Total Class Growth	
201	+35
202	+18
301	+32
302	+36
401	+13
402	+10
501	+14
502	+32

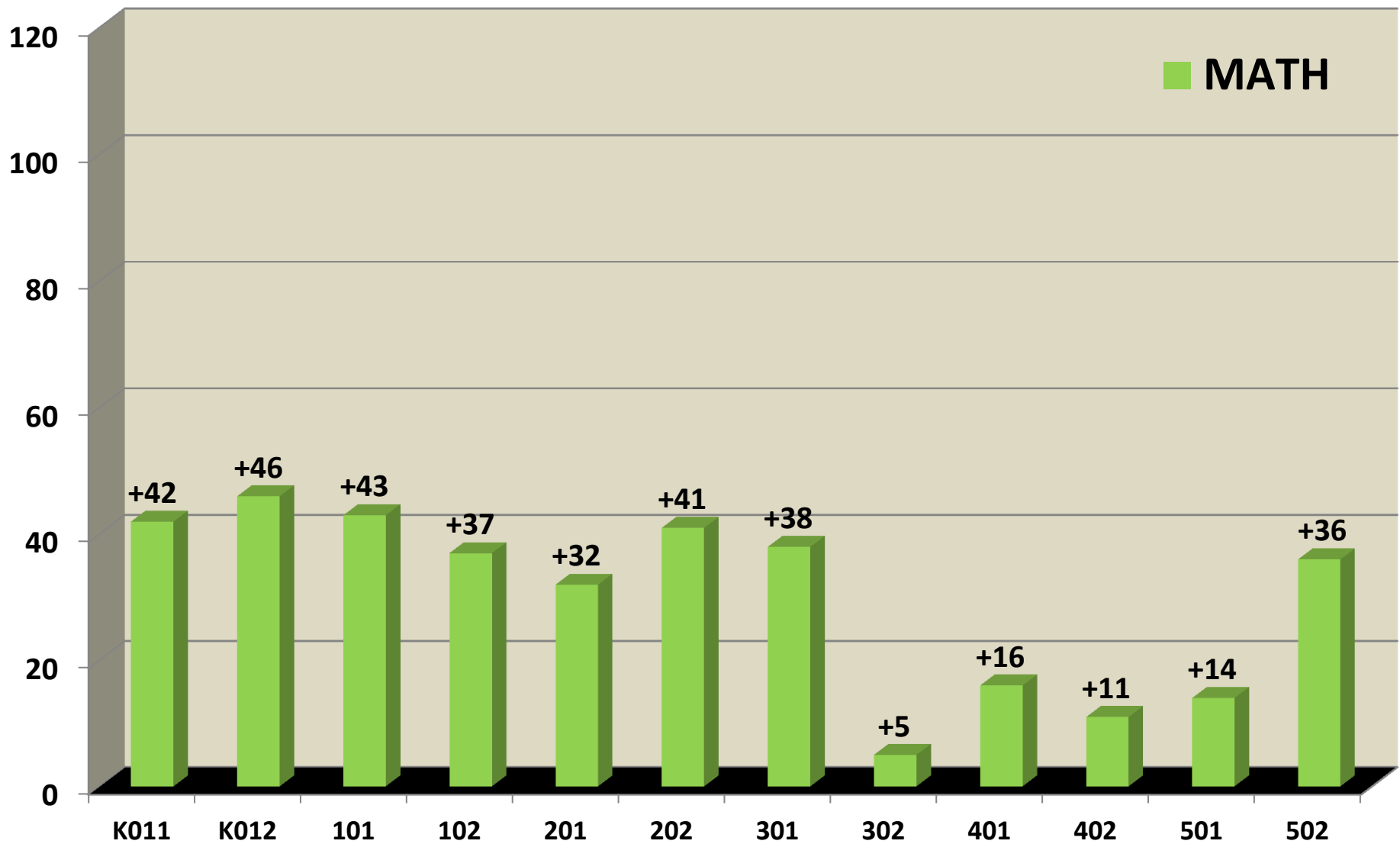
iReady Class Growth Report in READING for Mid-Year



Average Scale Score Gain Required to Achieve Target READING

Grade K	Grade 1	Grade 2	Grade 3	Grade 4	Grade 5
46-60	46-60	39-52	32-46	19-27	19-27

iReady Class Growth Report in MATH for Mid-Year



Average Scale Score Gain Required to Achieve Target MATH

Grade K	Grade 1	Grade 2	Grade 3	Grade 4	Grade 5
32-41	32-41	32-41	32-41	22-31	22-31