

Peninsula Preparatory Academy Charter School

Dashboard

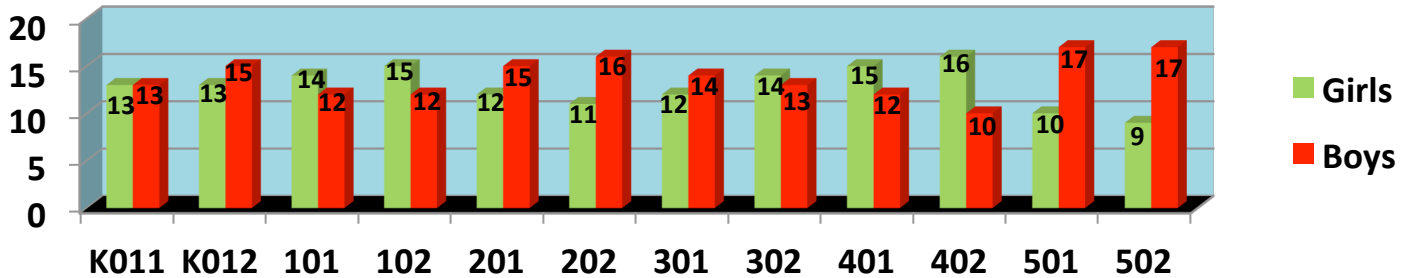
2014-2015

KEY SCHOOL DEMOGRAPHICS

| Enrollment Breakdown | | | |
|-------------------------------|-----|------------------------|-----|
| Male | 166 | Black | 179 |
| Female | 154 | Hispanic | 73 |
| Free Lunch | 221 | White | 6 |
| Reduced Lunch | 33 | Asian | 7 |
| Full Price | 46 | Black not Hispanic | 46 |
| Missing Information | 20 | Asian/Pacific Islander | 1 |
| Special Ed | 30 | American Indian | 2 |
| Special Ed Pending Evaluation | 12 | Native Hawaiian | 2 |
| ELL | 31 | White not Hispanic | 2 |
| AIS | 99 | Missing Information | 1 |

| Staffing | |
|--------------------|-----------|
| Category | # |
| Staff Members | 43 |
| Administration | 4 |
| Total Staff | 47 |

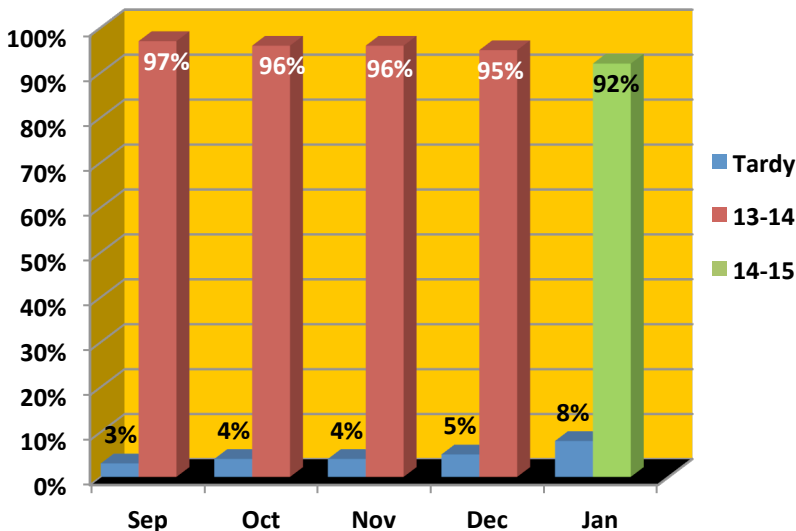
Student Gender by Class



Average % of Daily Attendance

| Average % of Daily Attendance | | | | | | | | | | |
|-------------------------------|-----|-----|-----|-----|--------------|-----|-----|-----|-----|------|
| 13-14 | Sep | Oct | Nov | Dec | Jan | Feb | Mar | Apr | May | June |
| | 97% | 96% | 96% | 95% | | | | | | |
| 14-15 | | | | | 92% -present | | | | | |

Average % of Daily Attendance and Tardies



Culture

Out School/ In School Suspensions

| | Sep | Oct | Nov | Dec | Jan |
|-----|-----|-----|-----|-----|-----|
| In | 0 | 2 | 0 | 0 | 1 |
| Out | 1 | 3 | 1 | 1 | 1 |

Parent Meetings

| Sep | Oct | Nov | Dec | Jan | Sep |
|-----|-----|-----|-----|-----|-----|
| 20 | 26 | 7 | 11 | 5 | 20 |

Referrals

| Sep | Oct | Nov | Dec | Jan | Sep |
|-----|-----|-----|-----|-----|-----|
| 19 | 32 | 11 | 5 | 5 | 19 |